

## President-Elect, President, and Past President

### About the Board of Directors

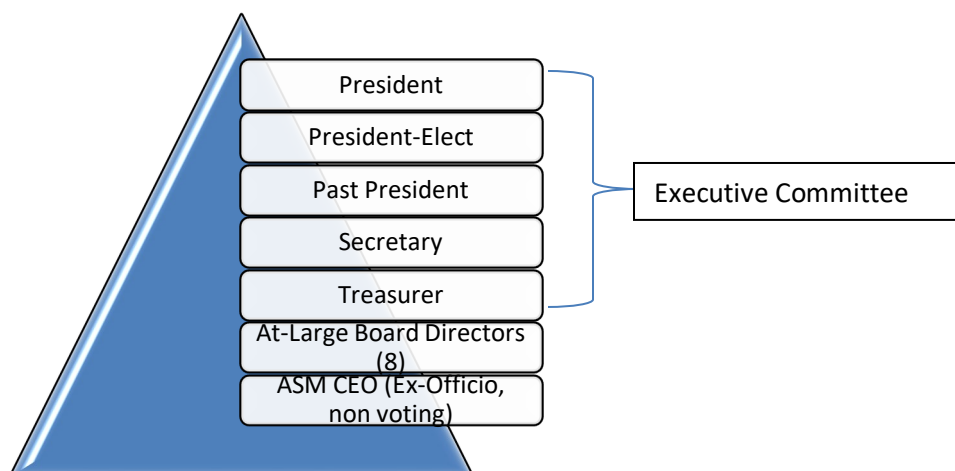
The ASM Board of Directors holds ultimate responsibility for all legal, financial, and governance matters. Each Director is responsible for ensuring that the Board acts in the best interests of the Society over those of any individual or group. The Board also provides direct oversight of the ASM CEO.

In carrying out its duties, the Board focuses on providing strategic direction for the Society, to help its mission to promote and advance the microbial sciences. The Board is responsible for setting clear priorities and providing visionary leadership that inspires innovation and positions the Society to shape the future of the microbial sciences.

Election to the Board of Directors is both a high honor and a serious responsibility. Directors are entrusted to serve ASM, its members, and its stakeholders with integrity, vision, and dedication. Board members are expected to demonstrate exemplary conduct and leadership, reflecting the weight of their position. In accordance with the laws of the District of Columbia, they must uphold the legal duties of care, loyalty, and obedience. In addition to the aforementioned, the following duties and responsibilities apply to all members of the Board of Directors:

- Represent and promote the organization's mission and goals to the public and stakeholders.
- Advocate, support, and enhance the mission and ASM.
- Oversee the annual CEO performance evaluation, ensuring the process is fair, constructive, and aligned with organizational goals.
- Serve with objectivity, impartiality, and ethical integrity, prioritizing the organization's mission over personal or external interests.
- Be a role model by showing visible leadership and actively participating in ASM Microbe and other society meetings and events.
- Abide by the ASM Bylaws and Code of Ethics

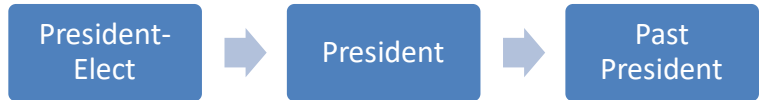
### *ASM Board of Directors*



**ASM President**

Election as ASM President-Elect results in a three-year commitment.

- President-elect (year 1)
- President (year 2)
- Past-President (year 3)



Each term runs from July 1 through June 30 of the following year. Each member of the presidential “chain” serves as a member of the ASM Executive Committee, along with the ASM Secretary and ASM Treasurer.

**Commitments During the Presidential Team**

The estimated time commitments for the three members of the Presidential team are detailed in the subsections below.

- Board of Directors meetings (three each year):
  - A strategic retreat, typically 2-days in late-winter/early spring (in-person)
  - A mid-year progress report in conjunction with ASM Microbe (in-person)
  - A budget-focused meeting in early December (virtual)
- Monthly meetings with the Executive Committee (virtual)
- Additional virtual meetings as needed to discuss time-sensitive matters
- ASM Programs and activities as requested

In **addition to the above**, the following commitments are expected for each role:

President-Elect	President	Past President
ASAE CEO Symposium with CEO (2-3 day commitment)	International travel to partner-society meetings as needed	Represent ASM at various forums as requested/needed
Hill Day (2 days)	Hill Day (2 days)	Hill Day (2 days)
Academy of Microbiology Governors Meeting (1 day)	Academy of Microbiology Governors Meeting (1 day)	Academy of Microbiology Governors Meeting (1 day)
Microbe Planning Meeting at the conclusion of the Microbe meeting	Represent ASM at various Committee meetings, Branch meetings, and forums as requested/needed	Nominating and Appointment Committee Meetings (Chair)
Represent ASM at various forums as requested/needed		

**President**

**Roles of the President**

- Chair of the ASM Board of Directors
- Chair of the Executive Committee
- Chair the Branch Organization Council
- Serve as the official spokesperson for ASM, representing ASM in a variety of public and ASM activities and events
- Collaborate with the CEO to prepare the agenda for Board of Directors and Executive Committee meetings
- Attend the ASM Microbe meeting and work with the Meetings staff to develop the theme for the Presidential Forum
- Maintain relationships with the volunteer leaders

### **Qualities of a Successful President**

- **Leadership**
  - Leading the board in fulfilling its governance responsibilities, including setting policies, ensuring accountability, and aligning decisions with the organization's mission.
  - Cultivate a strong and transparent working relationship with the Board and CEO and ensure open communication.
  - Lead the Board in reviewing overall strategy and making adjustments as needed.
  - Strong diplomatic skills with a natural ability to build relationships, foster collaboration, facilitate dialogue, and achieve consensus among diverse stakeholders
  - Bring Board together to engage in inclusive dialogue and ultimately speak with one voice in support of collective decisions.
  - Prior service on the ASM Board of Directors or other boards and committees that required strategic insight, creative problem-solving, and thoughtful deliberation.
- **Strategic Vision**
  - Set the strategic direction and vision of the Society in close partnership with the CEO, ensuring that programming and initiatives align with ASM's mission.
  - Provide strategic insight, navigate complexity, and make timely, well-informed decisions.
  - Serve as an innovative thought leader, guiding the Board in exploring new possibilities, setting priorities, and shaping the future of the microbial sciences while thoughtfully balancing risk, opportunity, and reward.
  - Working with the Board and other stakeholders, conceptualizes and articulates the future state of the microbial sciences and how ASM can advance the profession.
- **Inclusive Board Culture**
  - Foster inclusive Board culture that encourages diversity of thought.
  - Champion the value of differences/different perspectives, being open to new ideas, and, when necessary, challenging conventional wisdom.
  - Place Society needs above the needs of a specific group or constituency, aiming for the greater good.
  - Consider perspectives that encompass Society goals collectively, rather than represent specific groups or constituencies, especially when evaluating ideas and making decisions.

### **Communication/Communicator**

- Clear and compelling communicators.
- Demonstrate confident leadership and presence, with the ability to influence and inspire.
- Attuned to the needs and dynamics of the ASM member and volunteer community.

### **President-Elect**

The President-Elect collaborates with the President to learn the role of the President and to become familiar with the governance of ASM, programs and other aspects to ensure a successful officer transition. The President-Elect is a voting member of the Board of Directors and member of the Executive Committee. The President-Elect will assume the position of President upon completion of their term. **Because of this, the President-Elect should have the same qualities as the President listed above.**

#### Roles

- Serve as a Member of the ASM Board of Directors
- Serve as Member of Executive Committee
- Substitutes for the President in his/her absence

### **Past President**

The Past President partners and assists the President and the CEO in conducting Board affairs and is a voting member of the Board of Directors.

#### Roles

- Serve on the ASM Board of Directors
- Serve on the Executive Committee
- Chair the Nominating and Appointments Committee